

Talentjourney Mission & Vision

PARK Guiding Design Leaders

WP5

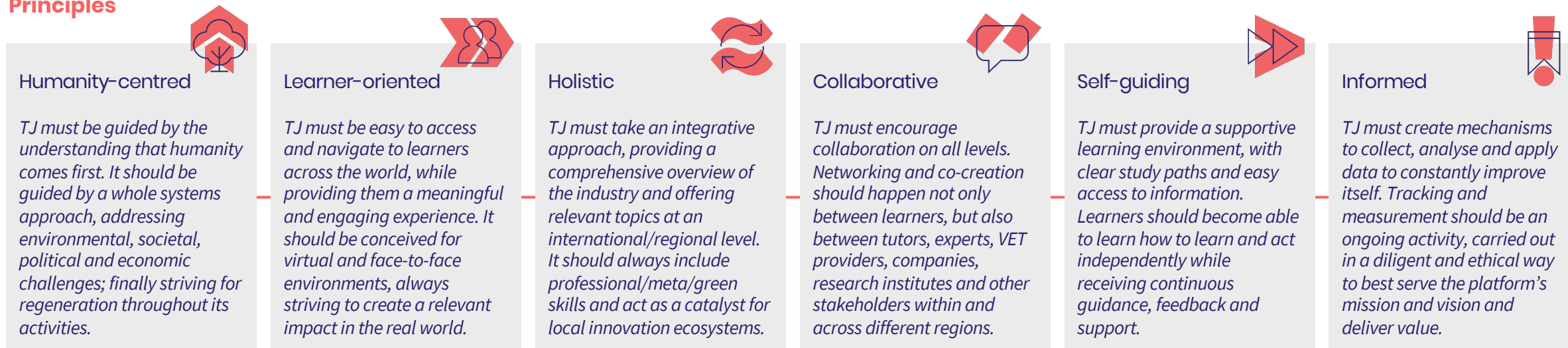
Mission

Create world-recognisable VET hubs based on practice, collaboration and innovation, offering personalised support and up-to-date knowledge from a rich network of international experts.

Vision

Empower VET learners with relevant skills and mindset to navigate lifelong learning opportunities and confidently shape a better future.

Principles



Value

Learner — Discover, develop and realize their talent

Tutor/teacher/trainer — Evolve as a tutor and better guide learners as a coach

VET provider/leadership — Make VET education learner-oriented and increase interest / recognition / investment

Company — Find and develop knowledge, capabilities and talent to further advance and innovate in IoT in Smart Manufacturing

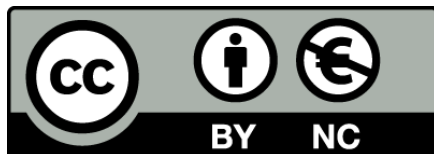
Thank you!

PARK Guiding Design Leaders



Co-funded by the
Erasmus+ Programme
of the European Union

The European Commission's support for the production of this publication does not constitute an endorsement of the contents, which reflect the views only of the author(s), and the Commission cannot be held responsible for any use which may be made of the information contained therein.



This work is licensed by the Talentjourney Partnership under a Creative Commons Attribution-NonCommercial 4.0 International (CC BY-NC 4.0) License.